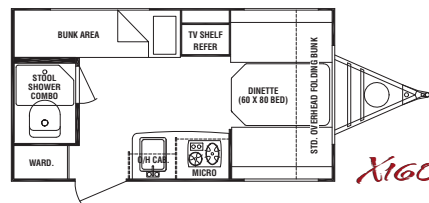
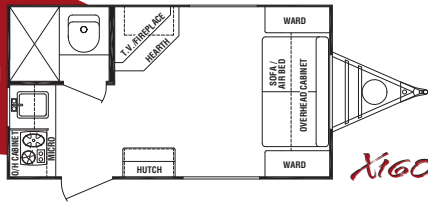


X139

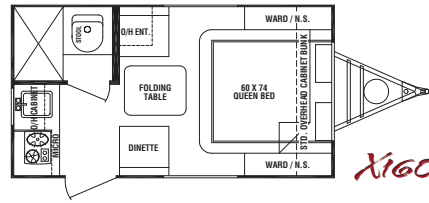


X160

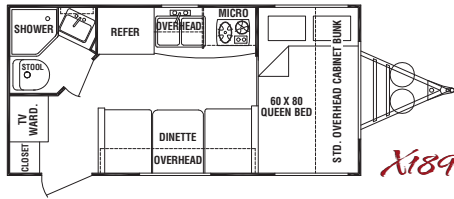
Model Coming Soon



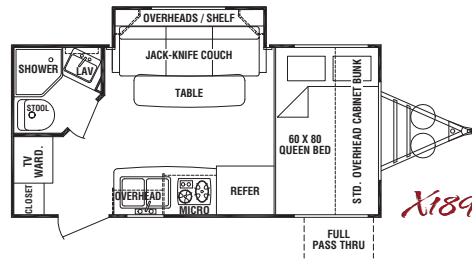
X160FS



X160WB

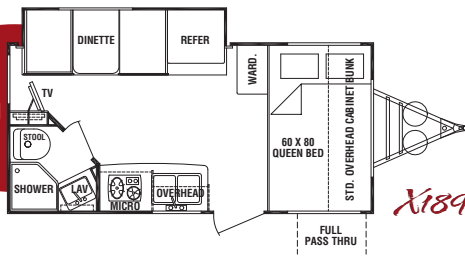


X189FBR

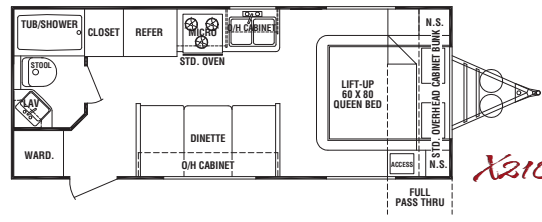


X189FBS

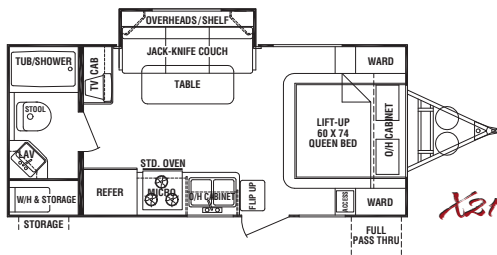
Model Coming Soon



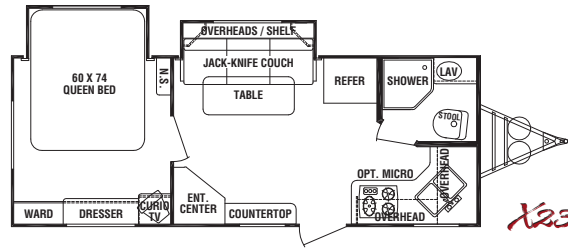
X189FDS



X210



X210WBS



X230DS

Fun Finder X	X139	X160	X160FS	X160WB	X189FBR	X189FBS	X189FDS	X210	X210WBS	X230DS
Exterior Length	14'9"	16'6"		16'11"	18'3"	18'9"		23'6"	21'9"	24'7"
Exterior Width	84"	84"		84"	84"	84"		90"	90"	90"
Exterior Height	8'2"	8'2"		8'2"	8'2"	8'2"		8'4"	8'4"	8'4"
Interior Height	6'4"	6'4"		6'4"	6'4"	6'4"		6'4"	6'4"	6'4"
Bed Size	N/A	N/A		60 x 74	60 x 80	60 x 80		60 x 80	60 x 74	60 x 80
Dinette Bed Size	60 x 80	60 x 80		N/A	33 x 72	N/A		40 x 72	N/A	N/A
Gaucha/Couch Size	N/A	N/A		N/A	N/A	35 x 66		N/A	35 x 66	35 x 66
Axle Weight (lbs.)	2,038	2,308		2,293	2,748	3,113		3,385	3,355	3,710
Hitch Weight (lbs.)	215	220		290	260	255		260	375	650
Dry Weight (lbs.)	2,253	2,528		2,583	3,008	3,368		3,645	3,730	4,360
GVWR (lbs.)	3,315	3,320		3,390	5,860	5,855		5,860	5,975	6,250
Cargo Capacity (lbs.)	1,062	792		807	2,852	2,487		2,215	2,245	1,890
Fresh Water Tank (gal.)	25	25		25	25	25		36	36	36
Gray Water Tank (gal.)	32	32		32	32	25		38	38	40
Black Water Tank (gal.)	25	25		25	25	25		38	38	25
LP Bottle (lbs.)	20	20		20	40	40		60	60	60
Power Converter (amps)	35	35		35	55	55		55	55	55
Elect. Ign. Furn. (BTUs)	16K	16K		16K	16K	16K		20K	20K	20K

For specs on this model check out www.cruiserrv.com

For specs on this model check out www.cruiserrv.com

*Cargo capacity does not include weight of water or LP gas.

NOTE: Weights are approximate and based on standard features. Optional equipment is not included. Cruiser RV, LLC constantly strives to improve its product. All specifications are subject to change without notice or obligation. See your local Cruiser RV dealer today to review a current model.