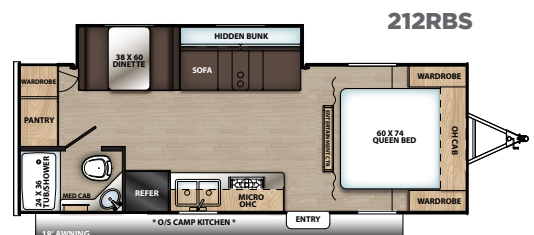
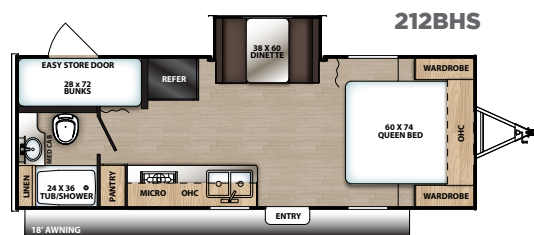
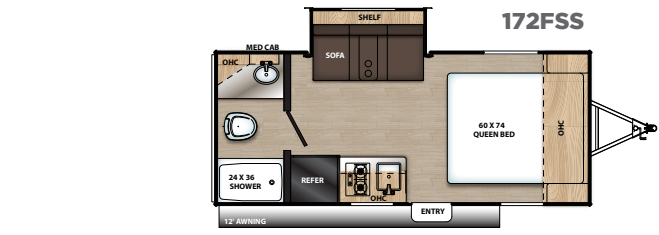
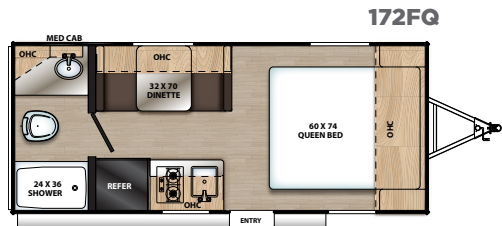
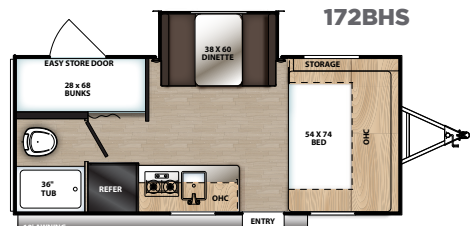
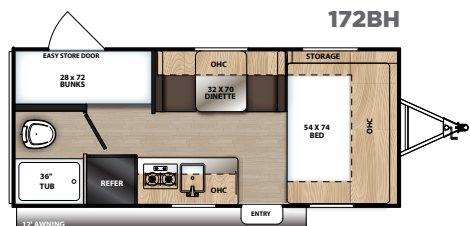
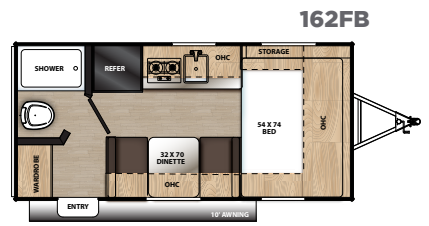
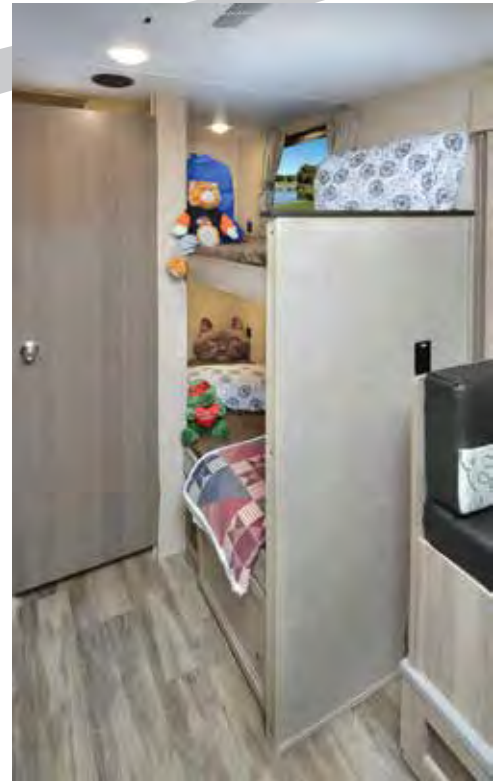


CATALINA SUMMIT SERIES



CATALINA

172BHS INTERIOR SHOWN



CONSTRUCTION FEATURES

NORCO NXG CHASSIS
 E-COATED A-FRAME
 FULL LENGTH FRAME E-COATED OUTRIGGERS
 E-COATED BUMPER W/DRAIN HOSE CARRIER AND END CAPS
 RADIUS DOUBLE ENTRY STEPS
 DEXTER® E-Z LUBE® AXLE(S)
 DEXTER® LEAF SPRING SUSPENSION
 ELECTRIC BRAKES
 NITROGEN FILLED D-RATED RADIAL TIRES
 SCREWED CABINETS W/POCKET BORED LUMBER CORE STILES
 100% ADHESION CONGOLEUM
 WOODPLANK LINOLEUM FLOORING
 12" O.C. FLOOR JOISTS
 4" FLOOR TO FRAME STEEL LAG BOLTS
 SOLID SHEET SEAMLESS FLOOR W/
 LIMITED LIFETIME WARRANTY
 DARCO UNDERBELLY WRAPPED FLOOR PROTECTION
 R7 FIBERGLASS COMPLETE INSULATION
 IN FLOOR, WALLS, AND ROOF
 ALPHA SUPERFLEX SEAMLESS ROOF
 MEMBRANE W/ 12 YEAR WARRANTY
 WALK-ON ROOF (TANDEM AXLE MODELS)
 RADIUS ENTRY AND BAGGAGE DOORS
 FRONT DIAMOND PLATE ROCK GUARD
 HEAVY DUTY PLATINUM .024 ALUMINUM MESA EXTERIOR
 AERODYNAMIC FRONT PROFILE W/ .030 SMOOTH ALUMINUM
 POLISHED ALUMINUM FENDER SKIRTS
 WATER HEATER BY-PASS WINTERIZATION KIT
 TINTED SAFETY GLASS WINDOWS
 ABS TUB SURROUND W/ SHELVES
 ROTO-CAST HOLDING TANKS
 78" INTERIOR CEILING HEIGHT

APPLIANCE DETAILS

7 CU. FT GAS/ELECTRIC RV REFRIGERATOR
 13,500 BTU ROOF A/C
 20,000 BTU FURNACE W/WALL THERMOSTAT
 12 VOLT ON DEMAND WATER PUMP
 MICROWAVE W/GLASS TURN TABLE
 6 GAL. DSI GAS WATER HEATER

EXTERIOR FEATURES

POWER AWNING
 WHITE LED PATIO LIGHT
 EXTERIOR HOT/COLD UTILITY SHOWER
 XL SWING ARM ENTRY DOOR GRAB HANDLE
 OUTSIDE CAMP KITCHEN (212RBS)
 BATHROOM SKYLIGHT
 (2)EXTERIOR MARINE GRADE SPEAKERS
 RAIN GUTTERS WITH DRIP SPOUTS
 ONMIDIRECTIONAL TV ANTENNA
 CABLE/SATELLITE HOOK-UP
 120 VOLT GFI EXTERIOR RECEPT
 LED EXTERIOR LIGHTS
 REAR VIEW CAMERA PREP
 HEAVY DUTY TONGUE JACK
 SUMMIT GRAPHICS PACKAGE
 4 STABILIZER JACKS W/PADS
 ZAMP SOLAR PORT
 20# LP TANK (1)SINGLE AXLE MODELS,
 (2)TANDEM AXLE MODELS
 E-COAT SPORT STYLE WHEELS
 SPARE TIRE, CARRIER, AND COVER

INTERIOR FEATURES

SEAMLESS THERMOFOIL COUNTER TOPS
 DEEP BASIN UNDERMOUNTED KITCHEN SINK
 FLUSH MOUNT THERMOFOIL KITCHEN SINK COVER(S)
 HIGH RISE KITCHEN FAUCET
 2 BURNER HIGH OUTPUT RANGE (SINGLE AXLE MODELS)
 3 BURNER HIGH OUTPUT RANGE (TANDEM AXLE MODELS)
 POWERED RANGE VENT
 SALVAGED LIGHT OAK CABINETS
 USB CHARGING STATIONS (BUNK BEDS & MONITOR PANELS)
 BLUETOOTH JENSEN STEREO WITH DVD/
 CD PLAYER, AM/FM, AND MP3
 (2) INTERIOR CEILING SPEAKERS
 12 VOLT LED INTERIOR LIGHTS
 120 VOLT INTERIOR OUTLETS
 ALL-IN-ONE MONITOR PANEL SYSTEM
 INTERIOR LIGHT SWITCHES
 POWER ROOF VENT - BATHROOM
 MEDICINE CABINET WITH MIRROR (N/A 172BH & 172BHS)

MARINE TOILET WITH FOOT FLUSH
 REVERSIBLE REFER FRONT INSERTS
 PORTABLE THERMOFOIL DINETTE TABLE (N/A 172FSS)
 HIDDEN ELECTRIC BUNK BED (212RBS)
 PLEATED WINDOW SHADES LIVING/FRONT BED AREAS
 HARD VALANCE DECORATIVE WINDOW TREATMENTS
 JIFFY SOFA W/FLIP DOWN CUP HOLDER/
 ARM REST (172FSS & 212RBS)
 DECORATIVE SOFA THROW PILLOWS (172FSS & 212RBS)
 QUILTED DESIGNER BEDSPREAD

STORAGE HIGHLIGHTS

MASTER BED OVERHEAD CABINETS
 OVERHEAD KITCHEN CABINETS
 LOWER KITCHEN CABINETS
 OVERSIZED UNDER BED STORAGE AREA
 EXTERIOR FRONT LARGE PASS THROUGH STORAGE AREA
 INTERIOR LOWER BUNK STORAGE DOOR (BUNK MODELS)
 HEADBOARD SHELF W/ WALL CUBBIES (172BH & 172BHS)
 DINETTE OVERHEAD CABINETS (NON-SLIDES)
 DINETTE STORAGE UNDER BENCHES (N/A 172FSS)
 BATHROOM LINEN CABINETS (SELECT FLOORPLANS)
 WARDROBE CLOSETS (212BHS & 212RBS)
 78" PANTRY (212BHS & 212RBS)
 EZ STORE LOCKING EXTERIOR DOOR W/FLIP-
 UP BUNK STORAGE(BUNK MODELS)

SAFETY FEATURES

SMOKE ALARM
 LP/CO2 GAS DETECTOR
 FIRE EXTINGUISHER
 EMERGENCY EXIT WINDOW
 DEAD-BOLT LOCK ON ENTRY DOOR
 DEAD-BOLT LOCK ON EZ STORE DOOR(BUNK MODELS)
 GFI RECEPT BY KITCHEN/LAV SINKS
 ENTRY DOOR SAFETY-VIEW WINDOW
 TRAILER TOW SAFETY CHAINS

OPTIONAL FEATURES

15,000 BTU A/C IPO 13,500 BTU
 SOLIDSTEP ENTRANCE STEPS IPO FLIP-DOWN STEPS



COACHMEN OWNERS ASSOCIATION

FREE MEMBERSHIP

www.coachmenowners.com

CATALINA SUMMIT SERIES

CUSTOMER SATISFACTION



www.ForestRiverBuyLocal.com



**24/7 EMERGENCY
ROADSIDE ASSISTANCE
WITH VEHICLE PURCHASE***

TOWING
JUMP-STARTS
TIRE CHANGES
FLUID DELIVERY
LOCKOUT
SERVICE

WINCH-OUT
MOBILE MECHANIC
TECHNICAL
SUPPORT
DEALER LOCATOR
SERVICES



*VALID FOR 1 YEAR FROM DATE OF PURCHASE

GVWR (Gross Vehicle Weight Rating) - is the maximum permissible weight of the unit when fully loaded. It includes all weights, inclusive of all fluids, cargo, optional equipment and accessories. For safety and product performance do NOT exceed the GVWR.

GAWR (Gross Axle Weight Rating) - is the maximum permissible weight, including cargo, fluids, optional equipment and accessories that can be safely supported by a combination of all axles.

UVW (Unloaded Vehicle Weight)* - is the typical weight of the unit as manufactured at the factory. It includes all weight at the unit's axle(s) and tongue or pin and LP Gas. The UVW does not include cargo, fresh potable water, additional optional equipment or dealer installed accessories.

*Estimated Average based on standard build optional equipment.

CCC (Cargo Carrying Capacity)** - is the amount of weight available for fresh potable water, cargo, additional optional equipment and accessories. CCC is equal to GVWR minus UVW. Available CCC should accommodate fresh potable water (8.3 lbs per gallon). Before filling the fresh water tank, empty the black and gray tanks to provide for more cargo capacity.

** Estimated average based on standard build optional equipment

Each Forest River RV is weighed at the manufacturing facility prior to shipping. A label identifying the unloaded vehicle weight of the actual unit and the cargo carrying capacity is applied to every Forest River RV prior to leaving our facilities. The load capacity of your unit is designated by weight, not by volume, so you cannot necessarily use all available space when loading your unit.

2019 CATALINA SUMMIT

	162FB	172BH	172BHS	172FQ	172FSS	212BHS	212RBS
SHIPPING WEIGHT	2,992	2,975	2,990	3,426	3,349	4,495	4,958
CARRYING CAPACITY	819	842	821	985	958	2,017	1,500
UVW	3,011	2,994	3,010	3,445	3,368	4,533	4,996
GVWR	3,830	3,836	3,830	4,430	4,326	6,550	6,496
HITCH WEIGHT	330	336	330	430	326	550	496
EXTERIOR HEIGHT (INCLUDES A/C)	10'	10'	10'	10'	10'	10'	10'
FRESH WATER CAPACITY (GAL.)	33	33	33	33	33	46	46
GREY WATER CAPACITY (GAL.)	25	25	25	25	25	32	32
WASTE WATER CAPACITY (GAL.)	25	25	25	25	25	32	32
AWNING LENGTH	10'	12'	12'	12'	12'	18'	18'
WHEEL SIZE	14"	14"	14"	14"	14"	14"	14"
EXTERIOR LENGTH (BUMPER TO HITCH)	18'3"	20'5"	20'5"	20'5"	20'5"	27'	27'
EXTERIOR WIDTH	84"	84"	84"	84"	84"	90"	90"
INTERIOR HEIGHT (COACH)	78"	78"	78"	78"	78"	78"	78"
AXLES	3500 lbs.	3500 lbs.	3500 lbs.	4000 lbs.	4000 lbs.	(2)3000 lbs.	(2)3000 lbs.

All information contained in this brochure is believed to be accurate at the time of publication. However, during the model year, it may be necessary to make revisions and Forest River, Inc., reserves the right to make all such changes without notice, including prices, colors, materials, equipment and specifications as well as the addition of new models and the discontinuance of models shown in this brochure. Therefore, please consult with your Forest River, Inc., dealer and confirm the existence of any materials, design or specifications that are material to your purchase decision.

For more details including videos, 360 views, photos and to see how Coachmen is leading the great outdoors, visit www.coachmenrv.com

Coachmen Industries 423 N. Main St., Middlebury, IN 46540
Phone: 574-825-5821



Learn More
Scan this barcode using a QR Reader on your smart phone to learn more about Forest River.



A Berkshire Hathaway company.

We are proud of our Coachmen Families.
Share your memories at:



#coachmencatalina



Coachmen Recreational
Vehicles

YOUR CATALINA DEALER